

KENCO RANCH

BEING A REPLAT OF A PART OF TRACTS 1, 2, 3, 4, 5, 6, 7, 8, 41, 42, AND ALL OF TRACTS 25, 26, 27, 28, 29, 30, 31, 32, 33, 34, 35, 36, 37, 38, 39, 40, 54, 55, 56, 57, 58, 59, 60, 61, 62, 63, AND 64, PALM BEACH FARMS CO. PLAT NO.1, AS RECORDED IN PLAT BOOK 2, PAGES 26 THRU 28 OF THE PUBLIC RECORDS OF PALM BEACH COUNTY, FLORIDA, SITUATED IN SECTION 30, TOWNSHIP 46 SOUTH, RANGE 42 EAST, PALM BEACH COUNTY, FLORIDA
SHEET 11 OF 12
SEPTEMBER 2001

STATE OF FLORIDA } S.S.
COUNTY OF PALM BEACH }
THIS PLAT WAS FILED FOR
RECORD AT _____ DAY OF
THIS _____ MO, 2001 AND
DULY RECORDED IN PLAT BOOK
_____ ON PAGES _____ THRU

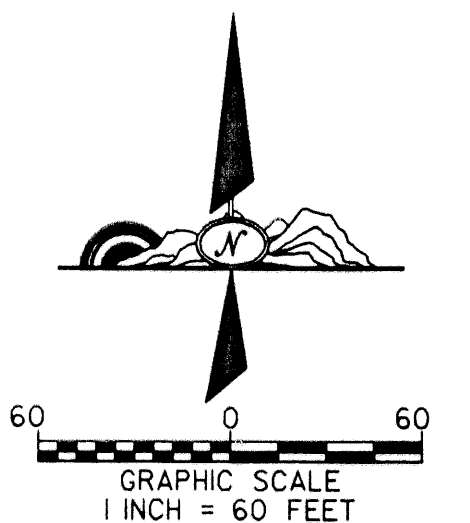
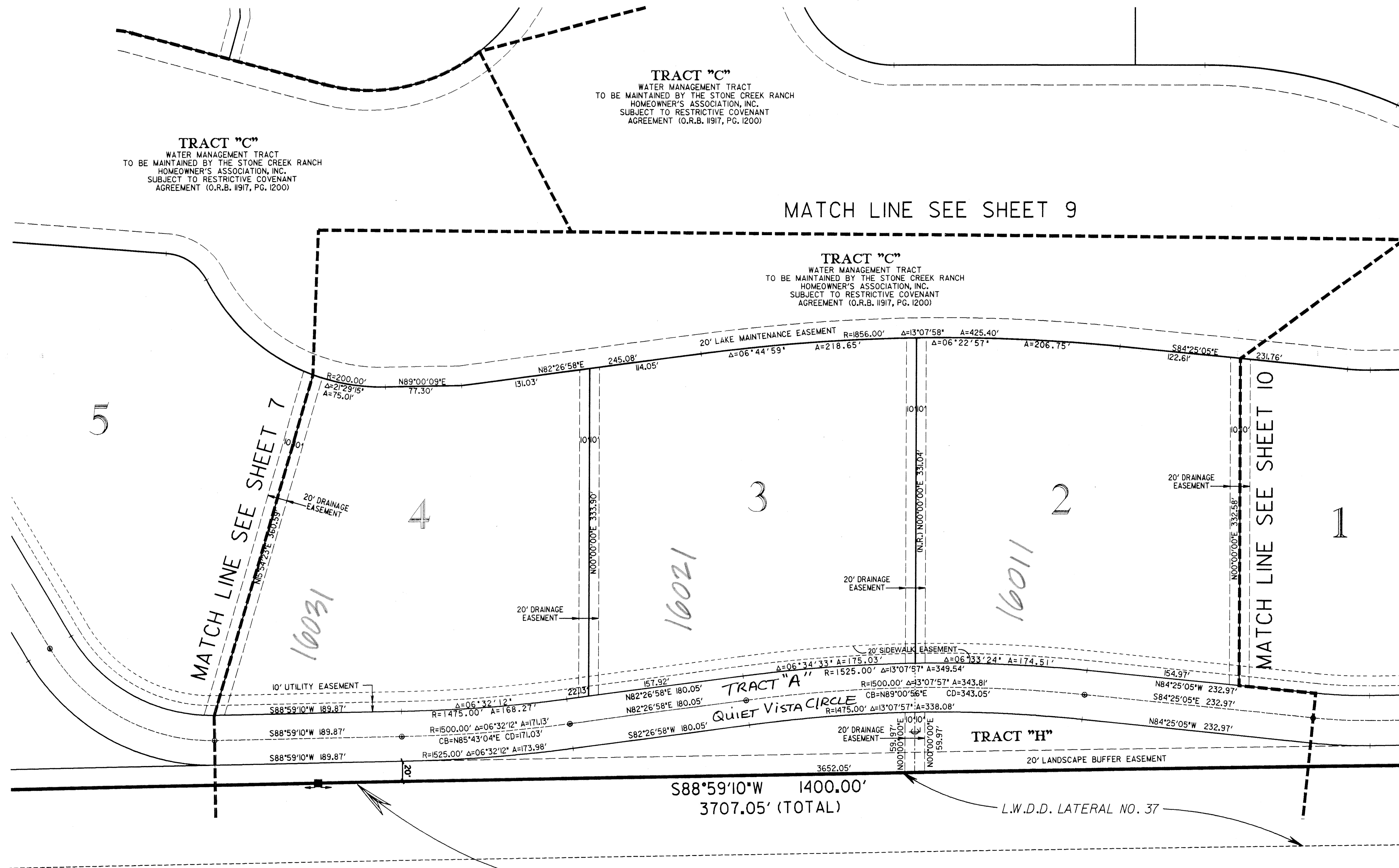
DOROTHY H. WILKEN, CLERK
CIRCUIT COURT
BY: _____ DC

TRACT "C"
WATER MANAGEMENT TRACT
TO BE MAINTAINED BY THE STONE CREEK RANCH
HOMEOWNER'S ASSOCIATION, INC.
SUBJECT TO RESTRICTIVE COVENANT
AGREEMENT (O.R.B. 1917, PG. 1200)

TRACT "C"
WATER MANAGEMENT TRACT
TO BE MAINTAINED BY THE STONE CREEK RANCH
HOMEOWNER'S ASSOCIATION, INC.
SUBJECT TO RESTRICTIVE COVENANT
AGREEMENT (O.R.B. 1917, PG. 1200)

MATCH LINE SEE SHEET 9

TRACT "C"
WATER MANAGEMENT TRACT
TO BE MAINTAINED BY THE STONE CREEK RANCH
HOMEOWNER'S ASSOCIATION, INC.
SUBJECT TO RESTRICTIVE COVENANT
AGREEMENT (O.R.B. 1917, PG. 1200)



SECTION 30, TOWNSHIP 46 SOUTH,
RANGE 42 EAST
THE PALM BEACH FARMS CO.
PLAT NO. 1
(PLAT BOOK 2, PAGE 26-28)

L.W.D.D. LATERAL NO. 37

THIS INSTRUMENT WAS PREPARED BY DAVID P. LINDLEY IN THE OFFICES OF
CAULFIELD AND WHEELER, INC., 7301A PALMETTO PARK ROAD, SUITE 100A
BOCA RATON, FLORIDA 33433.

SUBDIVISION KENCO RANCH
BOOK 973 PAGE 203
FLOOD ZONE B FLOOD MAP 1215 A
ZONING AAR ZIP CODE 33444
SE 99-1214
TAB 763
FUD NAME

CAULFIELD & WHEELER, INC.
Consulting Engineers - Land Planners - Surveyors
7301A West Palmetto Park Road - Suite 100A
Boca Raton, Florida 33433 (561) - 392-1991